

AirOutshield  
WALL

AirOutshield  
ROOF

AirOutshield  
SA280

AirOutshield  
UV



## AirOutshield Membranes

Vapour Permeable, Air Barriers  
for Sloped Roofs & Rain Screen Wall Systems

## THE NEED

The most important factor in building durability is the control of moisture accumulation in wall and roof assemblies. Moisture intrusion can result in reduced insulation performance, interior deterioration, mould, and structural damage. Every year the building industry in North America spends billions of dollars in litigation and repairs related to moisture intrusion.

## FUNCTION

SRP breathable membranes are multi-layer, spun bonded materials that control moisture intrusion and accumulation in the wall and roof assembly. SRP membranes resist water and air penetration while allowing water vapour to escape.

## WHY CHOOSE SRP MEMBRANES?

### Moisture Vapour Permeable

SRP membranes enable substrates and assemblies to dry, reducing potential for deterioration and mould.

### Proven Performance

Since being introduced to North America in 2002, SRP Membranes have been installed in hundreds of buildings with excellent results.

### Water Resistant

SRP membranes form a water control layer that repels water that penetrates primary cladding or roof system.

### Air Barrier

All AirOutshield membranes are rated as air barriers and the AirOutshield SA280 Self Adhering Membrane has been tested as a complete Air Barrier Assembly in accordance with the CAN/ULC S741 and CAN/ULC S742 achieving the best rating of A1.

### Durable

Tear and puncture resistance reduces repairs and associated labour costs.

### Self Cinching

SRP membranes seal around fasteners, reducing the need for sealants.

### High Temperature Resistance

The polypropylene (PP) composition provides superior resistance to high temperatures.

### UV Resistant

AirOutshield membranes resist UV during construction and AirOutshield UV is designed for long-term UV exposure and is suitable with open joint cladding systems.

### Lightweight

SRP products are lighter and easier to handle than asphalt based membranes.

### Slip Resistant

The textured finish is slip resistant.

### Versatile

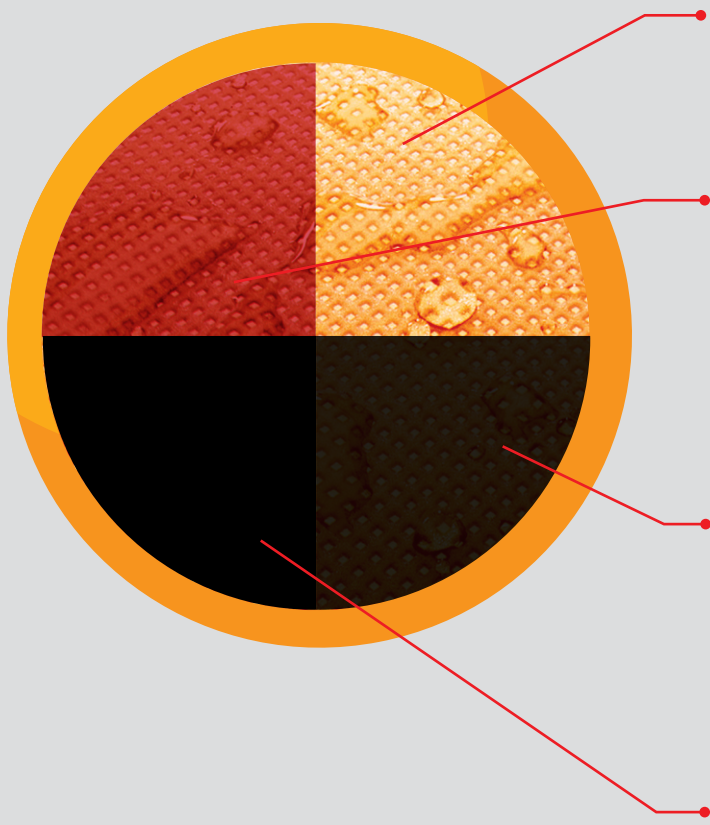
SRP membranes can be installed behind most wall cladding systems and sloped roofs.

### Systems Approach

SRP membranes are part of a complete system that includes compatible tapes and accessories.



**Cross section**, showing 3 distinct layers.



### SRP AirOutshield WALL

A sheathing membrane, secondary drainage plane, WRB and air barrier behind rain screen wall cladding systems.

### SRP AirOutshield SA280

Self-adhered, water vapour permeable air barrier for rain screen walls and sloped roofing systems. Installed behind the primary water shedding surface, SRP AirOutshield SA280 functions as the air barrier system sheathing membrane, WRB, secondary drainage plane, underlayment and slip sheet.

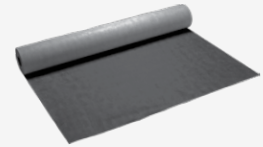
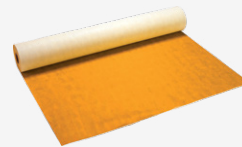
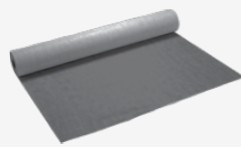
### SRP AirOutshield ROOF

Installed in sloped roofing systems as a water vapour permeable air barrier and secondary drainage plane. Ideal for use in insulated, sloped roofs covered with metal, clay, cedar and other systems requiring an underlayment and/or slip sheet.

### SRP AirOutshield UV

Black, unprinted air barrier with long-term UV resistance. Designed specifically for use with open-jointed rain screen cladding systems including slotted wood siding, panel systems, and other "open-joint" systems – where resistance to UV exposure is needed.

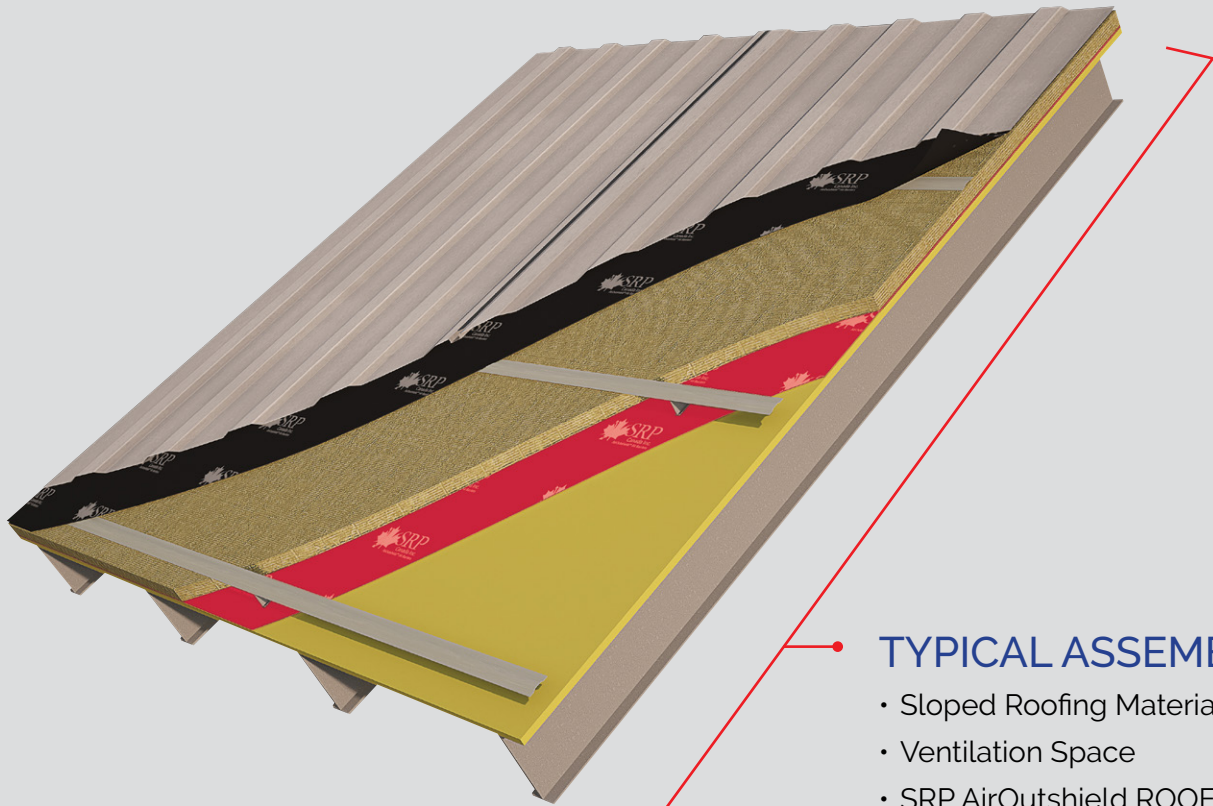
## SELECTION CHART



Product/Function	SRP AirOutshield SA280	SRP AirOutshield ROOF	SRP AirOutshield WALL	SRP AirOutshield UV
Sloped Roofing	●	●		
Walls	●	●	●	●
Drainage Plane	●	●	●	●
Air Barrier	●	●	●	●
UV Resistant				●
Colour	Red	Black	Orange	Black
Roll Size	1.45m x 50m (57 in x 164 ft)	1.5m x 50m (59 in x 164 ft)	1.5m x 50m (59 in x 164 ft)	1.5m x 50m (59 in x 164 ft)



# SLOPED ROOF APPLICATIONS



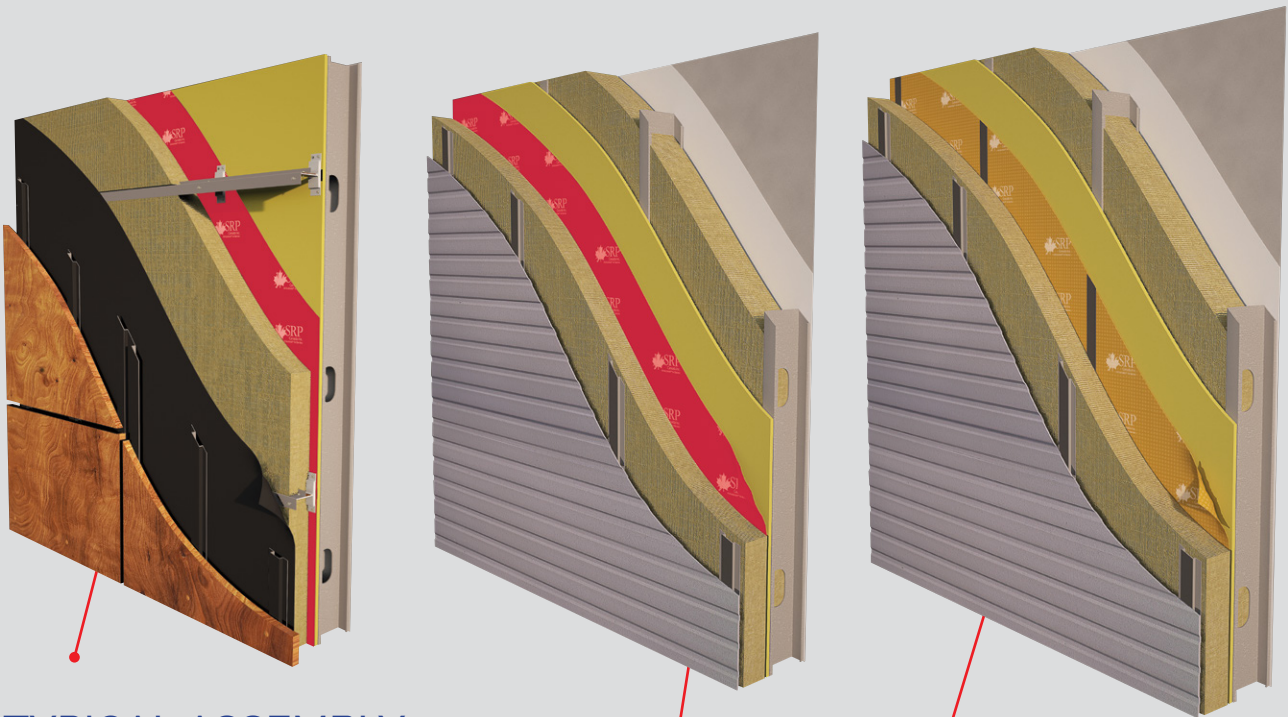
## TYPICAL ASSEMBLY:

- Sloped Roofing Material
- Ventilation Space
- SRP AirOutshield ROOF
- Insulation
- SRP AirOutshield SA280
- Sheathing

\* for use with steel, zinc, copper, slate, clay, concrete tiles, or cedar roofing materials



# WALL APPLICATIONS



## TYPICAL ASSEMBLY:

- Open-Jointed, Ventilated Rain Screen Cladding Systems
- Ventilation Space
- SRP AirOutshield UV (Black)
- Exterior Insulation
- SRP AirOutshield SA280
- Sheathing
- Framing, Insulation and Interior Vapour Barrier

## TYPICAL ASSEMBLY:

- Cladding
- Ventilation Space
- Insulation
- AirOutshield SA280 or AirOutshield WALL with SRP 60 UV Tape on all Seams
- Sheathing
- Framing, Insulation and Interior Vapour Barrier



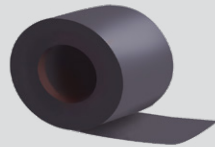


# ACCESSORIES



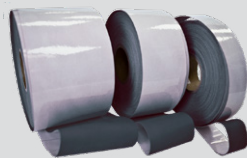
## **SRP 60 UV Seamseal Tape UV Resistant**

**Roll Size:** 60mm x 25m (2.4" x 81')  
**Colour:** Black



## **SRP 100 UV Seamseal Tape UV Resistant, Split Liner**

**Roll Size:** 100mm x 25m (4" x 81')  
**Colour:** Black



## **AirOutshield SA280 Flashing 200**

Ideal for detailing openings  
For use with all AirOutshield Membranes

**Roll Width:** 200mm  
Other widths available on request  
**Roll Length:** 50m  
**Colour:** Black

SRP TAPES AND FLASHINGS ARE AVAILABLE IN OTHER WIDTHS BY SPECIAL ORDER





**AirOutshield WALL**



**AirOutshield UV**



**AirOutshield SA280**



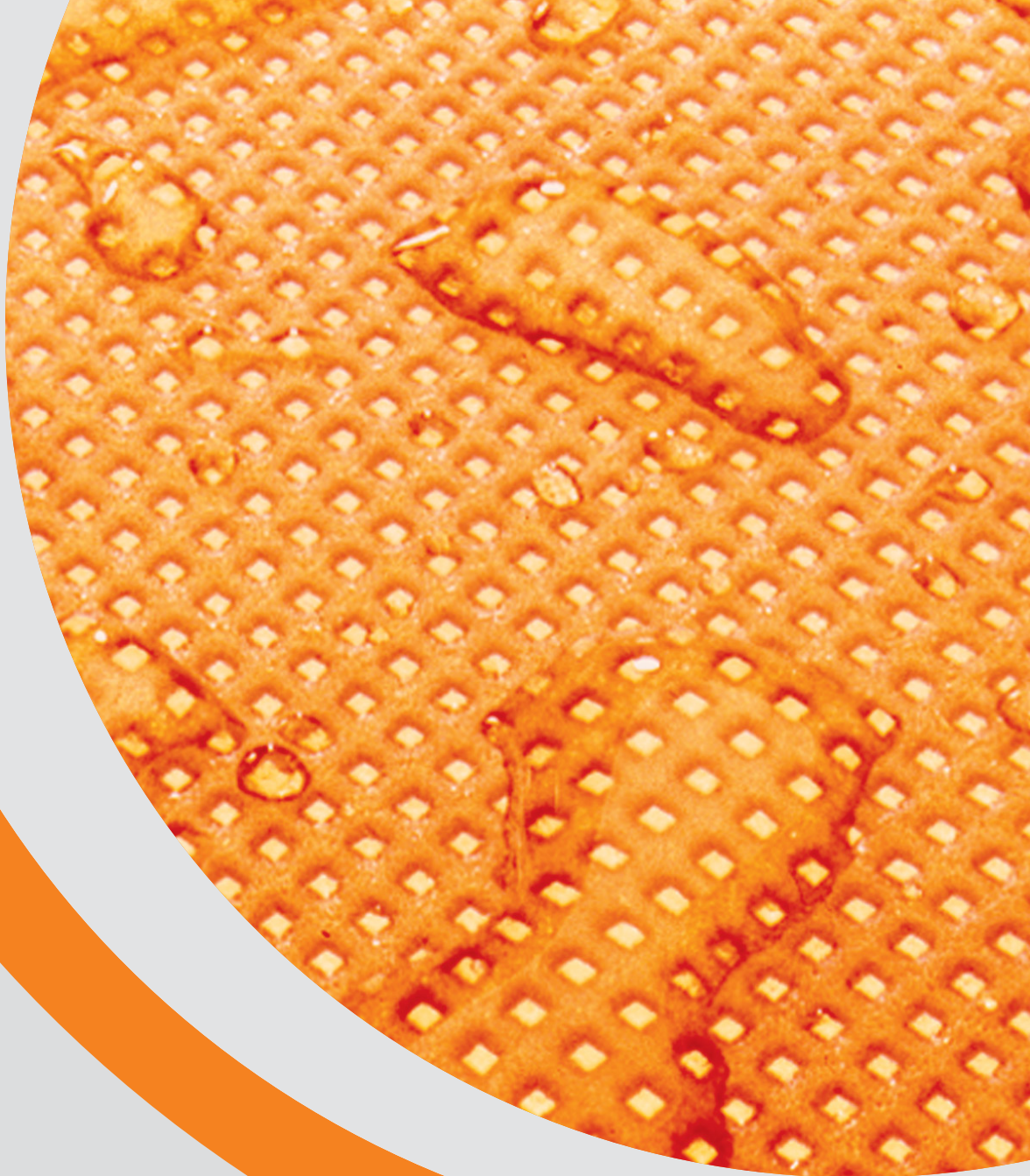
**AirOutshield ROOF**



- Technical Data Sheets
- Installation Guides
- Guide Specifications
- Detail Drawings

## **RESOURCES**

These items can be sourced from our website, [www.srpCanada.ca](http://www.srpCanada.ca)



**Distributed by:**



**Toll Free:** 1-866-533-0233  
**Email:** [info@srpcanada.ca](mailto:info@srpcanada.ca)  
[srpcanada.ca](http://srpcanada.ca)